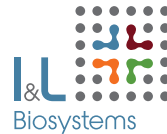


Start your automated ride

for your 3D cell culture workflow

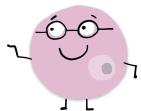


Optimize your 3D cell culture workflow and gain deeper insights

Did you know you can achieve even more effective results in your 3D cell culture workflow AND save time and money? I&L Biosystems is continuously looking for new alternatives to increase the output quality for lab professionals. After all, this technology is evolving to be more and more standard in life science and we aim to be up to date at all times.



Check out the
automated
workflow



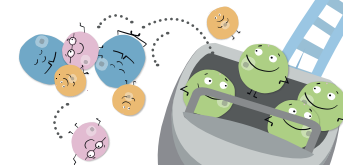
You can add devices to your workflow to:

- ✓ Process your cells gently
- ✓ Save time and costs and increase robustness and reproducibility of an assay
- ✓ Reduce errors
- ✓ Achieve high reliability of your outcome with a non-invasive system
- ✓ Easily identify which well contains which spheroid, for example high vs. low density spheroids
- ✓ Monitor the different workflow steps

Sort your cells

With the gentle cell sorters
from NanoCollect.

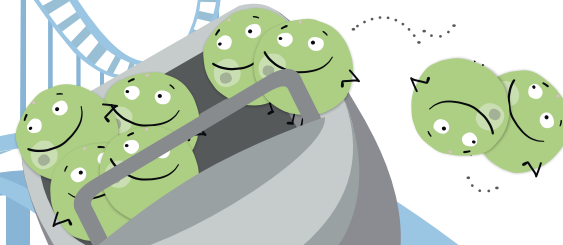
A compact, stress- and contaminant-free
way of modern flow cytometry
for healthy cells.



Select your spheroids

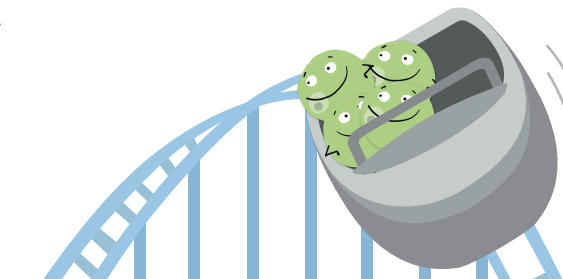
With the physical cytometer system
from CellDynamics.

Determine weight, size, and mass density
to identify the most promising population.



Use the selected ones

With the 3D system from Protein Fluidics.
An open platform to automate growth,
staining, collection, and analysis.



Ready for measurement

Achieve more effective results
and save time and money.

END AUTOMATED
WORKFLOW

Our recommendations



NanoCollect Biomedical Inc. - Wolf® & Wolf® G2

- Gentle low pressure sorting provides healthy cells
- Contaminant- and biohazard-free microfluidics
- Compact format for benchtop use



CellDynamics - W8

- Select most promising spheroids without labelling
- Based on physical parameters in a non-destructive method
- Sort spheroids with equal characteristics for further analysis



Protein Fluidics™ Inc. - Pu•MA System™ 3D

- Automated reagent exchange for complex bioassays incl. staining
- Protected sample chamber to prevent cell damage
- Small well with low reagent volume

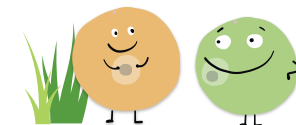
Also available for 3D cell culture

Rheolution viscoelasticity measurement • Axolotl 3D bioprinting and melt electrowriting •
TisXell cultivation chamber • Baker Ruskinn workstations • Nanofiber 3D scaffolds

Would you like
to learn more?

Contact us to discuss
potential options to
support and complete
your workflow.

02223 91920
info@il-biosystems.de



More lab time, less insights

The downside of a manual workflow:

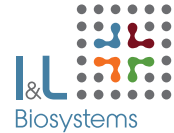
unsorted populations without knowing how and why.
Hours of valuable lab time are lost by having to use
all populations without focusing on the most promising.
In addition, it's difficult to reproduce the same
promising population.



...and keep seeking
in the dark



END MANUAL
WORKFLOW



I&L Biosystems GmbH
Königswinterer Straße 409
53639 Königswinter • Germany
Tel.: +49 2223 9192-0
Fax: +49 2223 9192-48
info@il-biosystems.de
www.il-biosystems.com