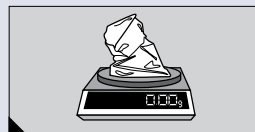


Food Sample Procedure

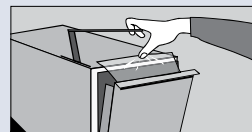
1:10 or Greater Dilution of Food Sample



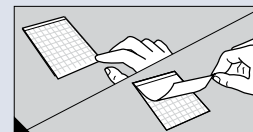
1 Weigh or pipette food product into an appropriate container.



2 Add appropriate diluent.



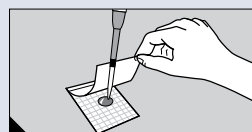
3 Blend or homogenize sample per current procedure.



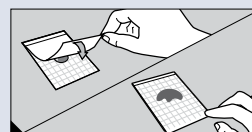
4 Place 3M™ Petrifilm™ Aerobic Count Plate (AC) on **level** surface. Lift top film.



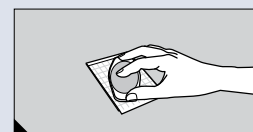
5 Using a diluting pipettor, combine 0.5mL of Aerobic Lactic Acid Bacteria Broth (MRS and Chlorophenol Red) with 0.5mL diluted food sample within the pipette tip.



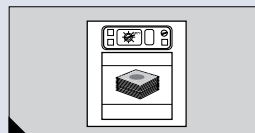
6 With pipettor **perpendicular** to 3M™ Petrifilm™ AC Plate, place entire 1mL of sample onto center of bottom film.



7 Release top film; allow it to **drop**. DO NOT roll top film down.

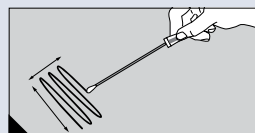


8 With ridge side down, place plastic spreader over inoculum. Gently apply pressure to evenly distribute sample.

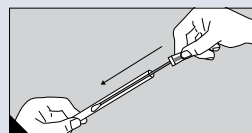


9 Incubate 3M™ Petrifilm™ AC Plates and inspect plates.

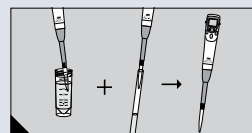
Environmental Monitoring Procedures**



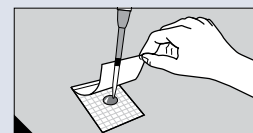
1 Select swab containing appropriate neutralizer. Hold the swab handle to make a 30° angle with the surface. Firmly rub the swab head slowly and thoroughly over the desired surface area. Rub the head of the swab three times over the surface, reversing direction between alternating strokes.



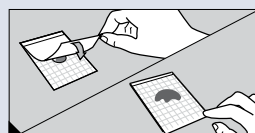
2 After sampling is complete, securely insert the swab head back into the swab tube and transport to the lab for plating. Plate the swab solution as soon as possible.



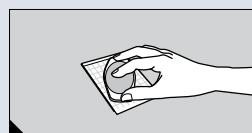
3 Mix lactic broth plus swab solutions in equal volumes.



4 With pipettor **perpendicular** to 3M™ Petrifilm™ AC Plate, place entire 1mL of sample onto center of bottom film.



5 Release top film; allow it to **drop**. DO NOT roll top film down.



6 With ridge side down, place plastic spreader over inoculum. Gently apply pressure to evenly distribute sample.



7 Incubate 3M™ Petrifilm™ AC Plates and inspect plates.

** 3M™ Quick Swab and Swab Samplers with either DE Neutralizing Broth or Letheen Broth are available from 3M.